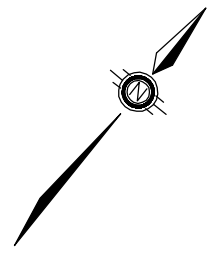
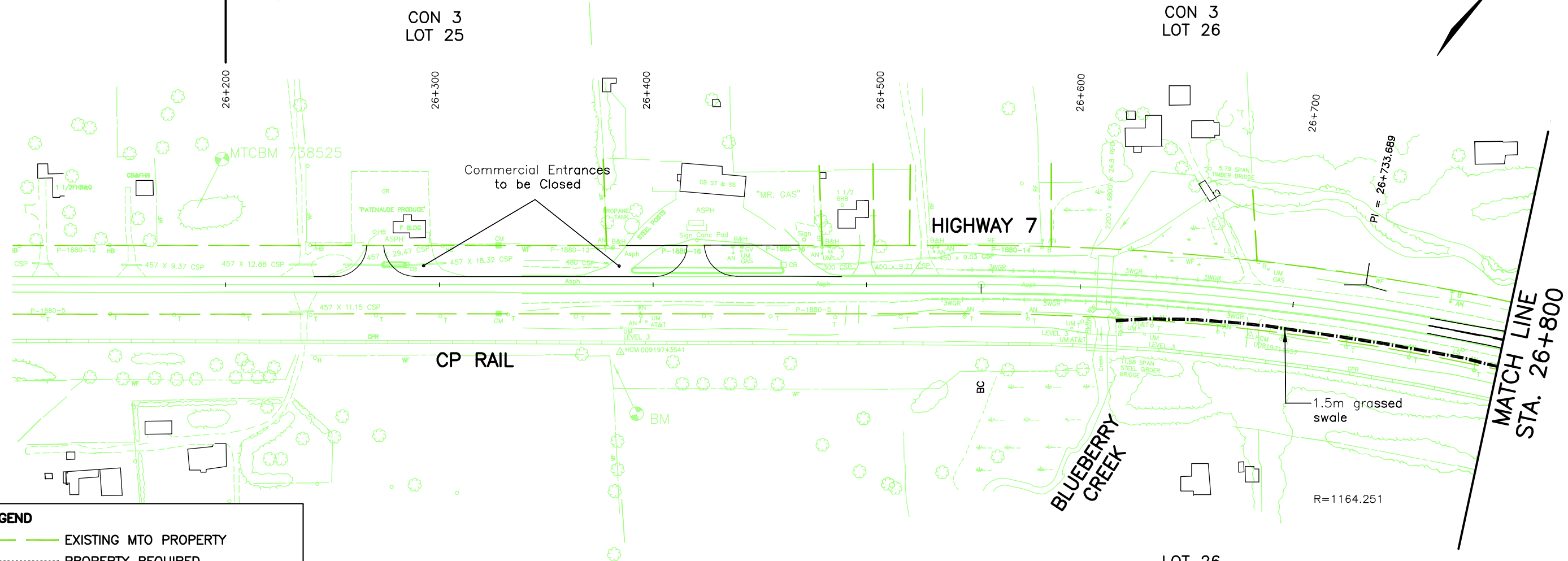


CO LANARK  
TAY VALLEY TOWNSHIP



STUDY LIMITS



- LEGEND**
- EXISTING MTO PROPERTY
  - ..... PROPERTY REQUIRED
  - TRAFFIC SIGNALS

**GENERAL NOTES:**

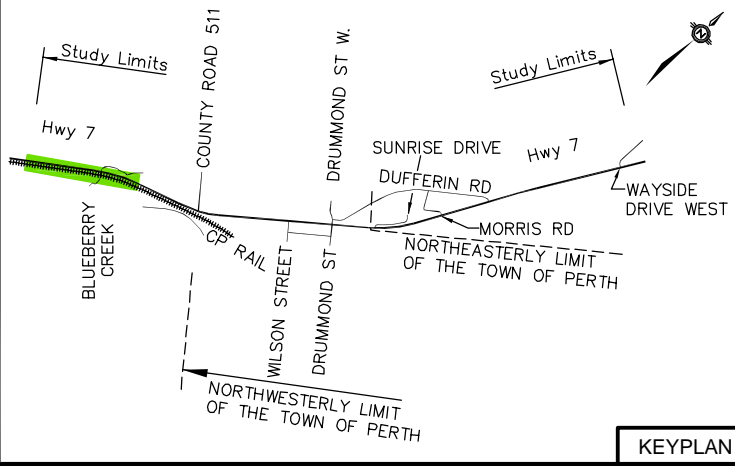
1. ANY SIDEWALK IMPROVEMENTS WILL BE FUNDED SOLELY BY THE MUNICIPALITY

LOT 25  
CON 3

LOT 26  
CON 3

TAY VALLEY TOWNSHIP  
CO LANARK

2004-002 frame.dwg - 22 Jun 2006 - 13:34

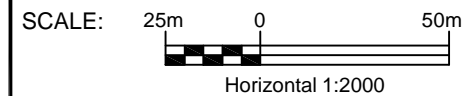


KEYPLAN

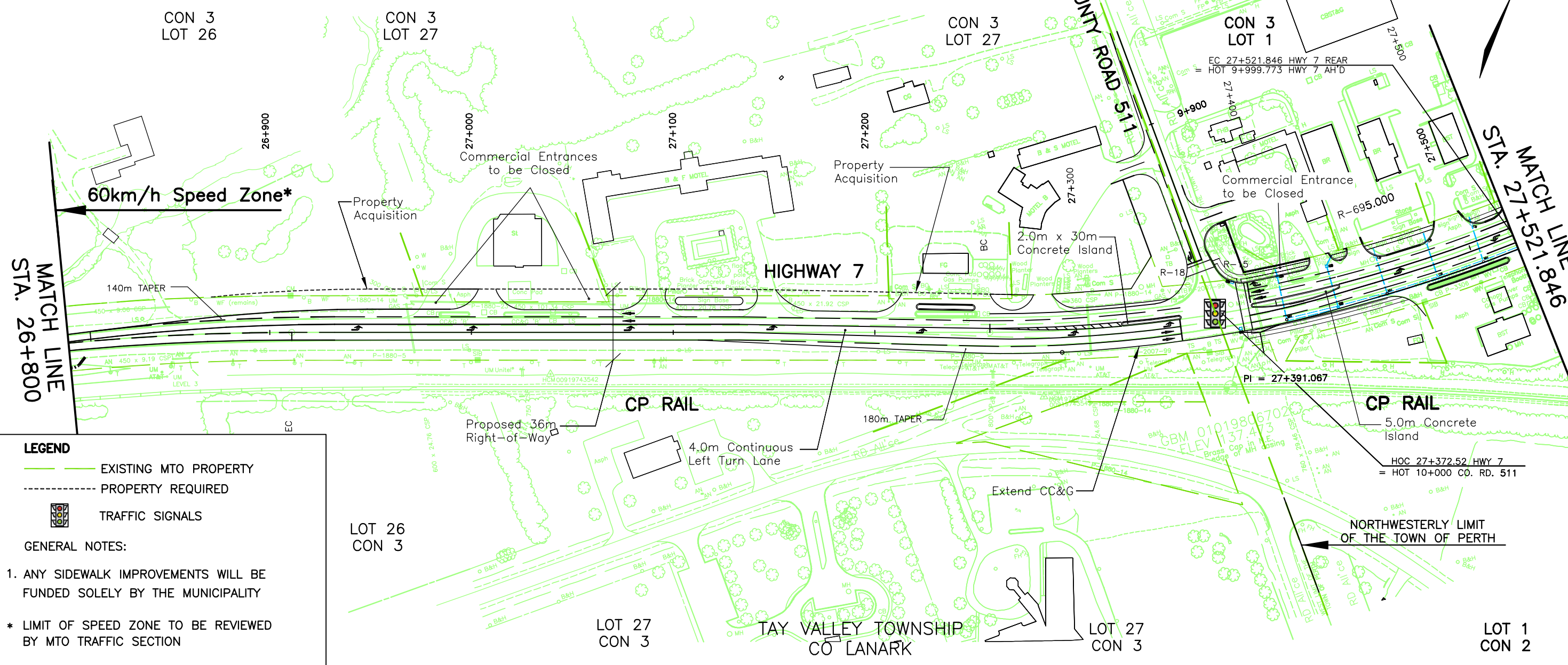
# PLATE 1

## STA 26+100 TO STA 26+800 RECOMMENDED PLAN

Highway 7 (Perth) Preliminary Design and Environmental Assessment  
1.0 km West of County Road 511 Easterly to Wayside Drive West, 4.0 km  
GWP No. 75-99-00



CO LANARK  
TAY VALLEY TOWNSHIP



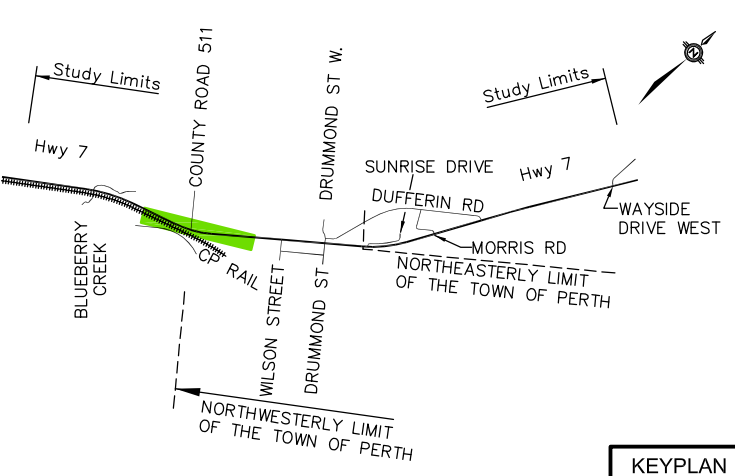
**LEGEND**

- EXISTING MTO PROPERTY
- PROPERTY REQUIRED
- TRAFFIC SIGNALS

**GENERAL NOTES:**

- ANY SIDEWALK IMPROVEMENTS WILL BE FUNDED SOLELY BY THE MUNICIPALITY

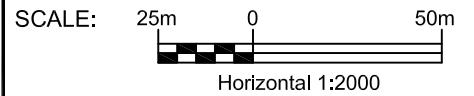
\* LIMIT OF SPEED ZONE TO BE REVIEWED BY MTO TRAFFIC SECTION



# PLATE 3

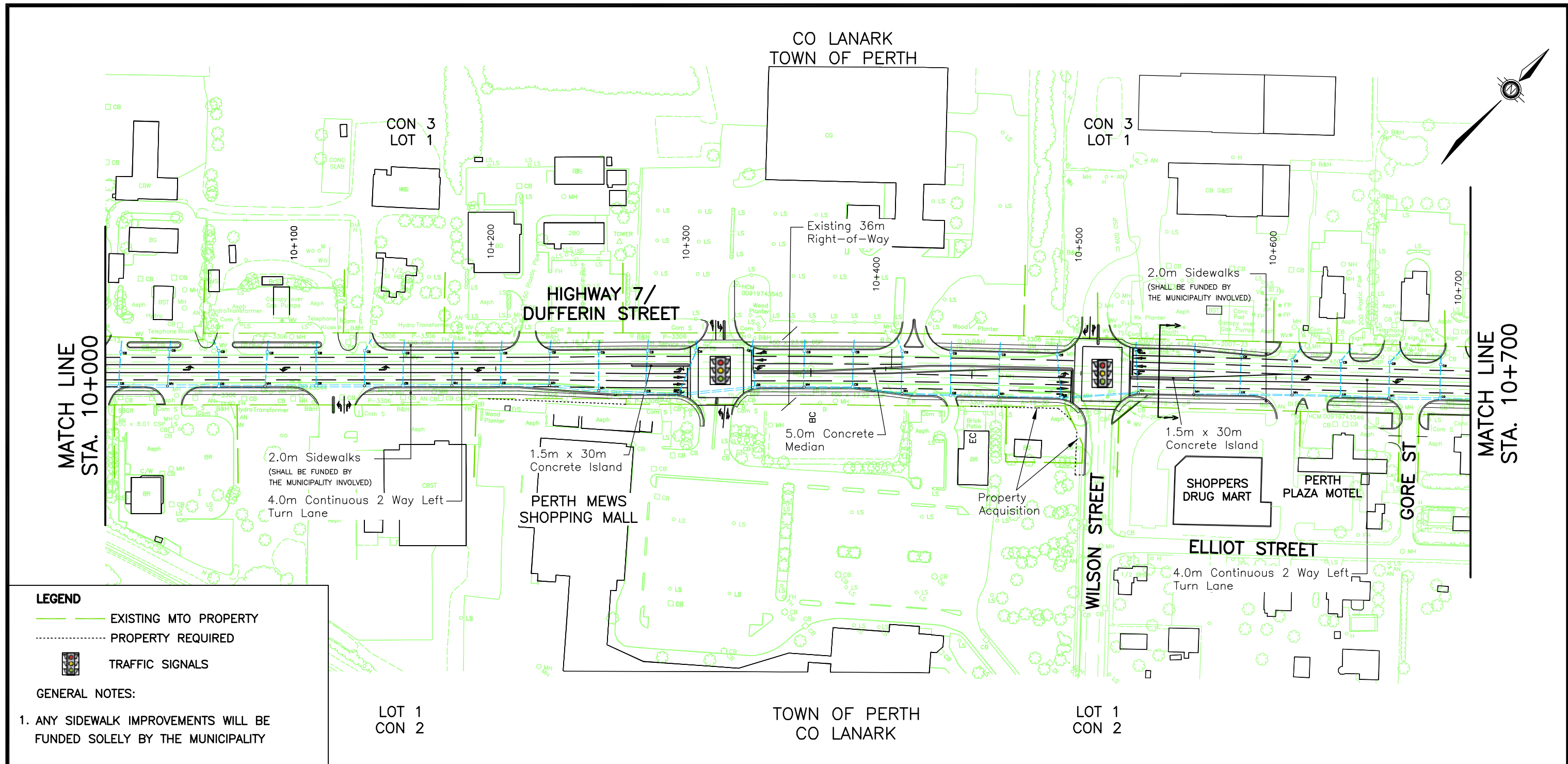
## STA 26+800 TO STA 27+521.846 RECOMMENDED PLAN

Highway 7 (Perth) Preliminary Design and Environmental Assessment  
1.0 km West of County Road 511 Easterly to Wayside Drive West, 4.0 km  
GWP No. 75-99-00



GWP75-99-00 RECOMMENDED PLAN.dwg - Thu, 20 Aug 2009 - 8:58

2004-002 frame.dwg - 22 Jun 2006 - 13:34



**LEGEND**

- EXISTING MTO PROPERTY
- - - PROPERTY REQUIRED
- TRAFFIC SIGNALS

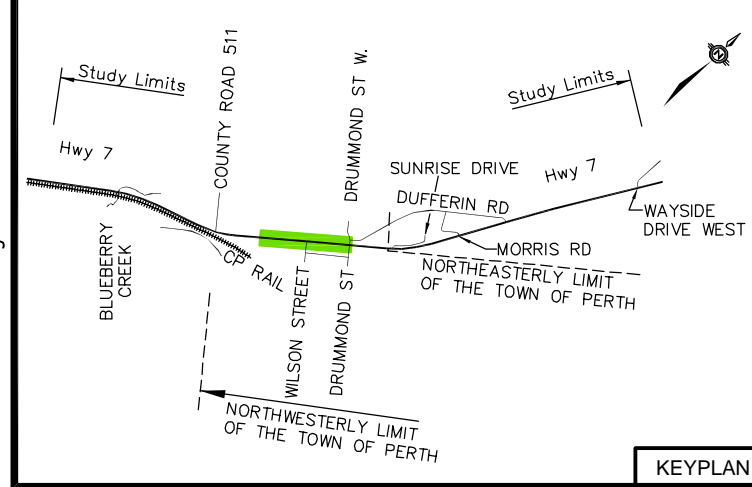
**GENERAL NOTES:**

1. ANY SIDEWALK IMPROVEMENTS WILL BE FUNDED SOLELY BY THE MUNICIPALITY

LOT 1  
CON 2

TOWN OF PERTH  
CO LANARK

LOT 1  
CON 2

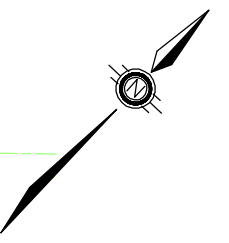
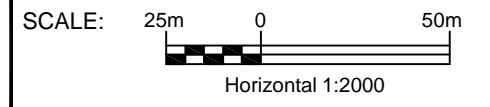


KEYPLAN

# PLATE 5

## STA 10+000 TO STA 10+700 RECOMMENDED PLAN

Highway 7 (Perth) Preliminary Design and Environmental Assessment  
1.0 km West of County Road 511 Easterly to Wayside Drive West, 4.0 km  
GWP No. 75-99-00





CO LANARK  
DRUMMOND NORTH-ELMSLEY TWP

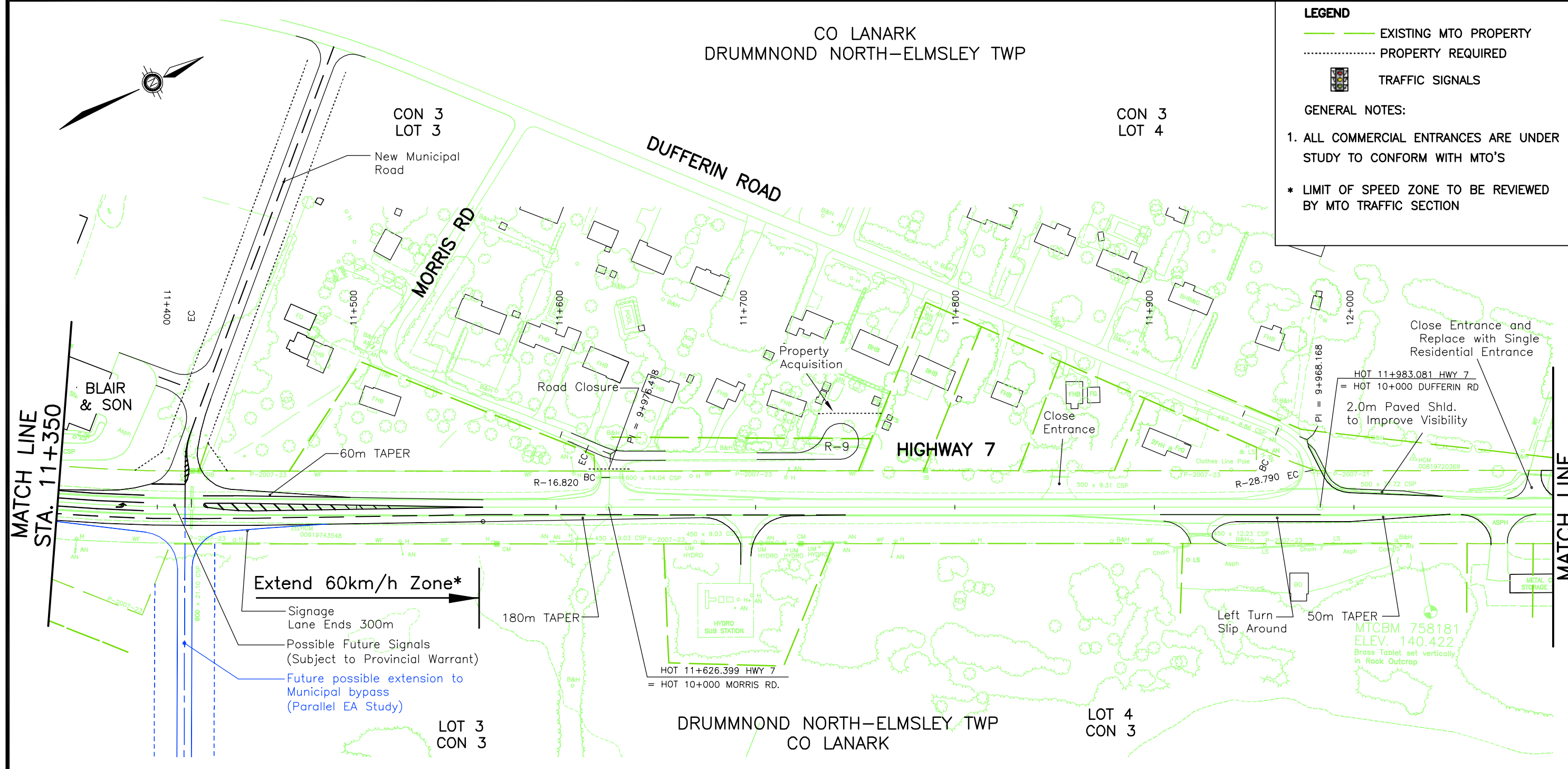
**LEGEND**

- EXISTING MTO PROPERTY
- PROPERTY REQUIRED
- TRAFFIC SIGNALS

**GENERAL NOTES:**

- ALL COMMERCIAL ENTRANCES ARE UNDER STUDY TO CONFORM WITH MTO'S

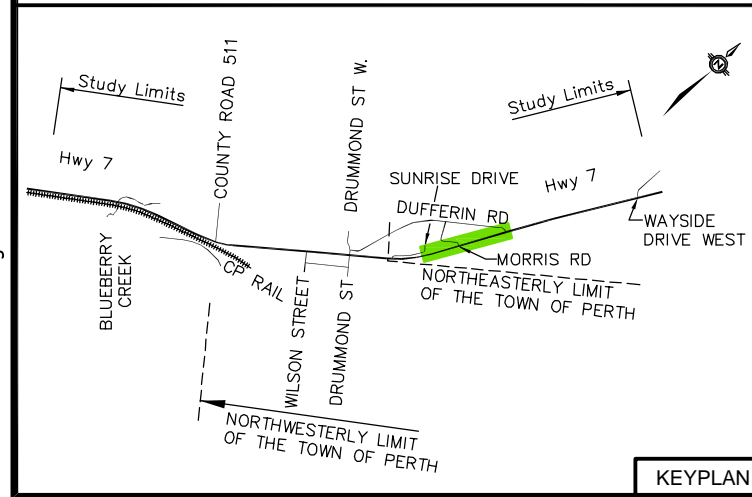
\* LIMIT OF SPEED ZONE TO BE REVIEWED BY MTO TRAFFIC SECTION



MATCH LINE  
STA. 11+350

MATCH LINE  
STA. 12+100

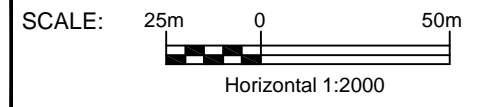
2004-002 frame.dwg - 22 Jun 2006 - 13:34



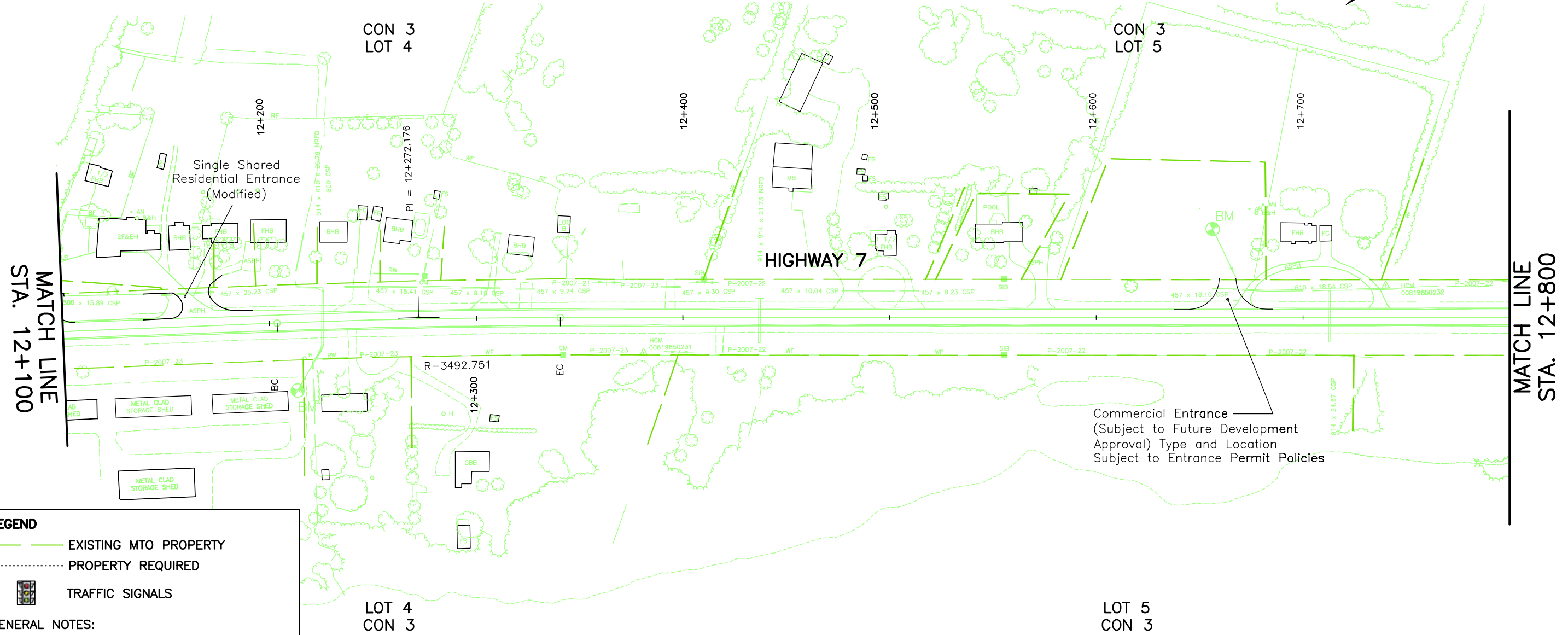
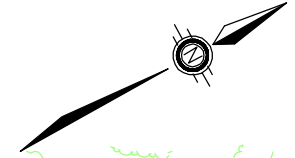
**PLATE 9**

**STA 11+350 TO STA 12+100  
RECOMMENDED PLAN**

Highway 7 (Perth) Preliminary Design and Environmental Assessment  
1.0 km West of County Road 511 Easterly to Wayside Drive West, 4.0 km  
GWP No. 75-99-00



CO LANARK  
DRUMMOND NORTH-ELMSLEY TWP



- LEGEND**
- EXISTING MTO PROPERTY
  - - - PROPERTY REQUIRED
  - TRAFFIC SIGNALS

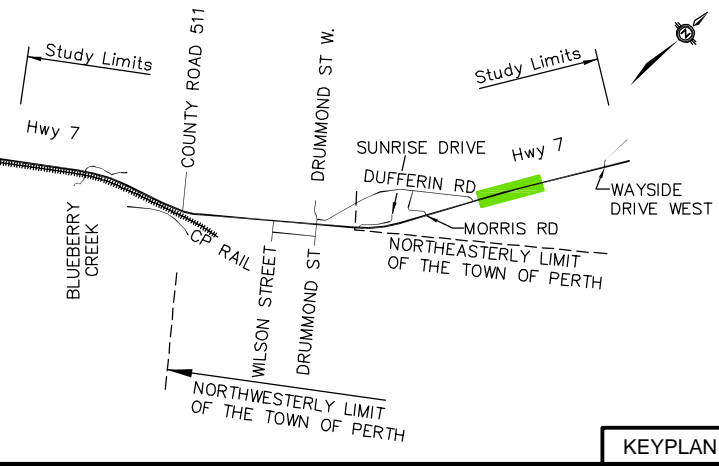
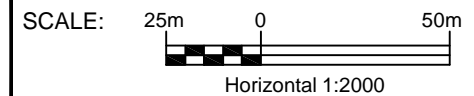
**GENERAL NOTES:**

1. ANY SIDEWALK IMPROVEMENTS WILL BE FUNDED SOLELY BY THE MUNICIPALITY

# PLATE 11

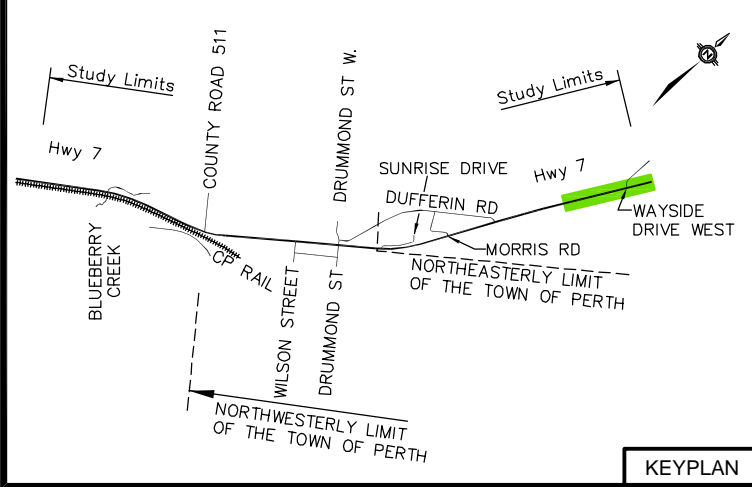
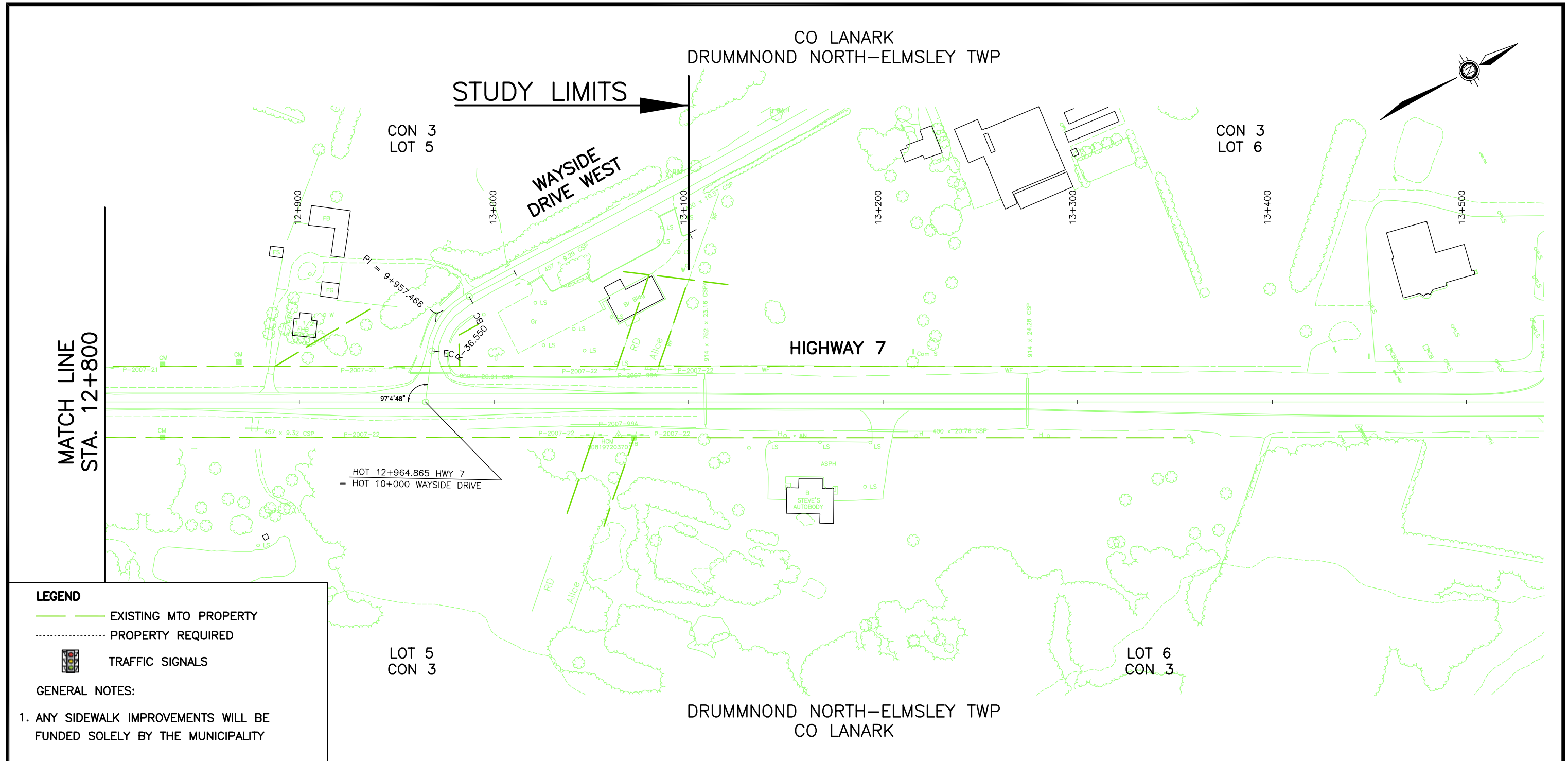
## STA 12+100 TO STA 12+800 RECOMMENDED PLAN

Highway 7 (Perth) Preliminary Design and Environmental Assessment  
1.0 km West of County Road 511 Easterly to Wayside Drive West, 4.0 km  
GWP No. 75-99-00



2004-002 frame.dwg - 22 Jun 2006 - 13:34

2004-002 frame.dwg - 22 Jun 2006 - 13:34



# PLATE 13

## STA 12+800 TO STA 13+100 RECOMMENDED PLAN

Highway 7 (Perth) Preliminary Design and Environmental Assessment  
1.0 km West of County Road 511 Easterly to Wayside Drive West, 4.0 km  
GWP No. 75-99-00

